

RESPONSE TO CHILD ABUSE



Child abuse is the harming (whether physically, emotionally, or sexually), ill treatment, abuse, neglect, or deprivation of a child or young person, caused by actions (or inactions) of adult(s) in the child or young person's life.

The child's best interests and welfare should be paramount and used as a guide for any action taken.

Emergency phone numbers

Child, Youth and Family: 0508 326459 (toll free)

Police: Emergency phone 111 or your regional child abuse team through your local police station

Child safety advocate

Each school should appoint and train a staff member as a child safety advocate. The advocate can act as a medium between authorities involved in child abuse complaint management and the school.

What should schools do when a student discloses or a teacher suspects child abuse?

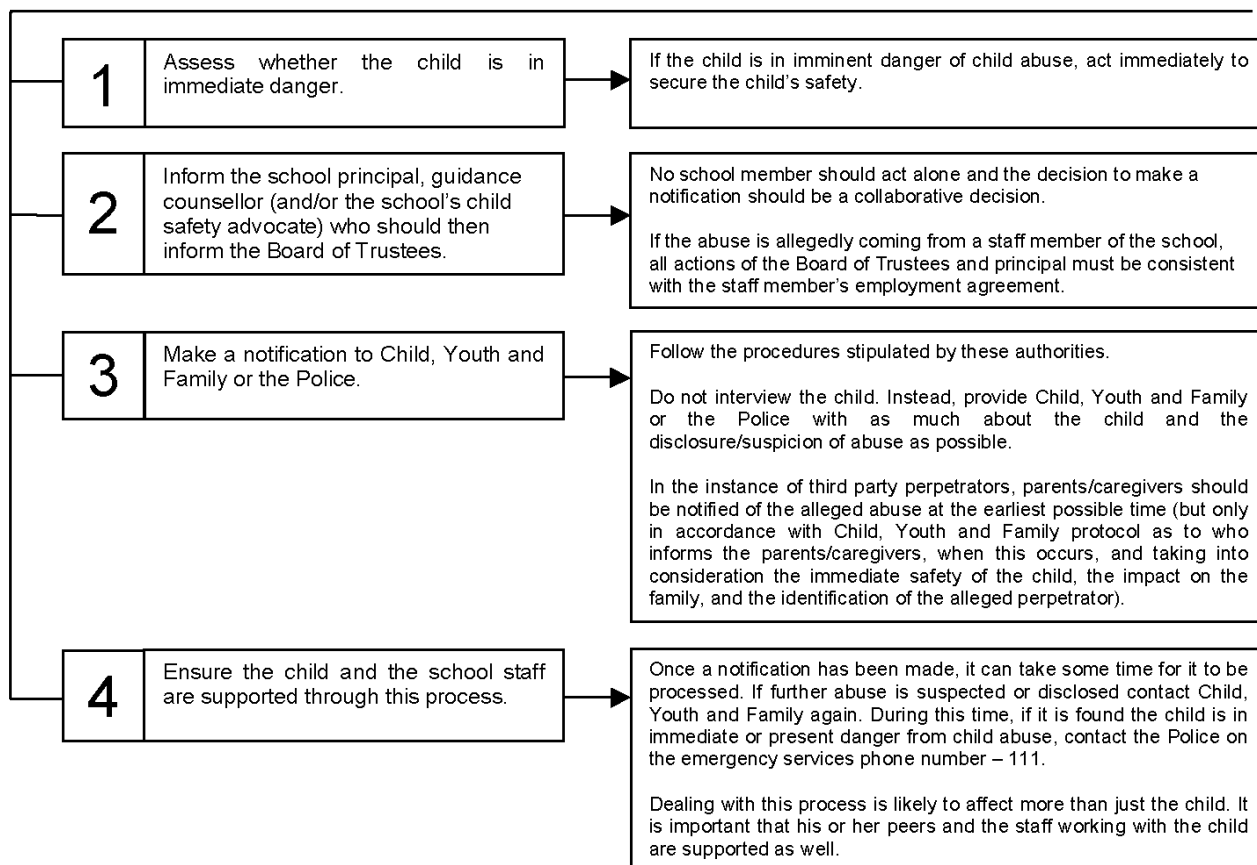


Figure 4: Suggested action to take when a student discloses or a teacher suspects child abuse